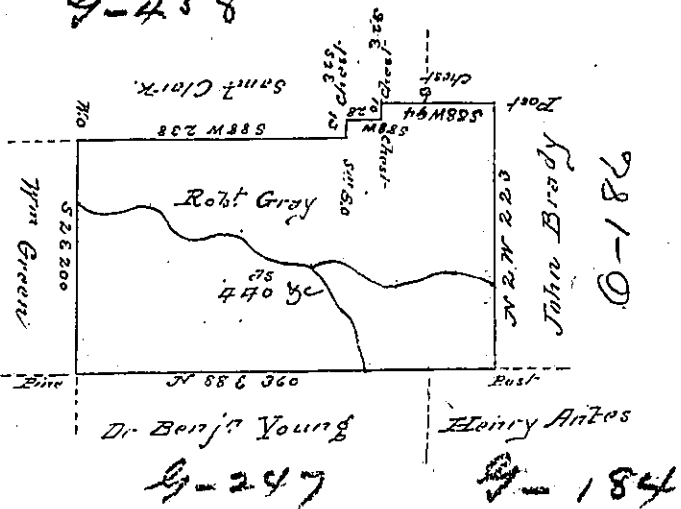


C-161-50-461

6d
19
X

9-458

Page 287



9-247

9-184

A Draft of a tract of land called fellowships situate on a branch
 (.obl.) Creek joining Land surveyed for Saut Clark & others in
 Shamoken (.obl.) and County of Northmd containing four hundred
 & forty acres (.obl.) Surveyed for Robt Gray the 25th day of April
 1793 by Virtue (.obl.) dated the 19th day of Feby 1793.
 by Wm (.obl.)

To Daniel Brodhead Esqr }
 Suror Genl. o }

IN TESTIMONY that the above is a copy of the original remaining on file in the
 Department of Internal Affairs of Pennsylvania, made con-
 formably to an Act of Assembly approved the 16th day of
 February, 1833, I have hereunto set my Hand and caused
 the Seal of said Department to be affixed at Harrisburg, this
 Twenty-first day of April 1891.

Thos J. Steward
 Secretary of Internal Affairs